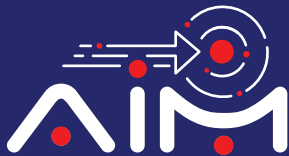




TECH TALK

Issue 160
October 2025

**Pioneering Tech
Leadership with a
Legacy of Excellence.**



Galaxy Office Automation Pvt. Ltd.

We are proud to share that we have been recognized as the **Storage Business Champion** at the **Dell Technologies Forum – Partner Summit India 2025**.

This prestigious recognition is a testament to our unwavering commitment to delivering cutting-edge storage solutions and creating measurable business value for our customers.

A heartfelt thank you to Dell Technologies for this honor, to our incredible team for their dedication, and to our valued partners and clients for their continued trust and collaboration.

Here's to driving innovation together and shaping the future of technology!



Foreword

Dear Readers,

Last month, I talked about the powerful convergence of Cloud, AI, and Edge. This month, I want to delve deeper into the critical role of orchestration—the strategic discipline required to make these technologies work in concert to deliver tangible business outcomes.

The true potential is unlocked only when Cloud, AI, and Edge are seamlessly integrated and intelligently managed. The future belongs not to those who simply adopt these tools, but to those who can conduct them.

The Cloud is the grand hall where the symphony is composed and rehearsed. Through hybrid and multi-cloud architectures, we can now design this "orchestral hall" with precision, ensuring each workload is performed in the optimal environment for performance, cost, and compliance.

Artificial Intelligence serves a of both the composer, creating the scores (algorithms and models) that drive intelligent action, and the lead soloist, performing complex cognitive tasks. In the cloud, AI composes by analysing vast datasets to train and refine models. At the edge, it makes real-time decisions, interpreting sensor data, and providing instant insights without the latency of a round-trip to the cloud. The magic happens when the AI 'composer' in the cloud continuously learns from the performances of its 'soloists' at the edge, creating a virtuous cycle of improvement.

The edge is the distributed orchestra—the multitude of devices, sensors, and gateways in factories, retail stores, and hospitals that interact directly with the physical world. Its value lies in its proximity to the action, delivering the low-latency, real-time responsiveness that modern applications demand.

However, an orchestra without a conductor can quickly descend into cacophony. At Galaxy, we believe that the system integrator is the conductor. Our role is to ensure that every element of this complex technological symphony works in harmony.

The question for business leaders is no longer if you should adopt these technologies, but how you will orchestrate them to create a resilient, intelligent, and responsive organization.

This Diwali, we encourage you to think about your own orchestra. Do you have the right score, the skilled performers, and most importantly, the conductor to bring it all together?

We at Galaxy are dedicated to being that conductor for our clients. Our teams are equipped with the expertise and platforms to design, integrate, and manage these converged environments, turning technological potential into measurable business advantage. Let's discuss how we can help you compose your future.

On behalf of Galaxy and TechTalk, I wish all our readers a **very happy Diwali and a prosperous new year.**

Happy reading!

Anoop Pai Dhungat
Chairman & Managing Director





Future is now!

Humans as Wallets: Microchips Set to Replace ID, Credit Cards and Keys

Thousands of Swedes are having microchips implanted into their bodies so that they don't need to carry key cards, IDs, and even train tickets.

About 3,000 people in Sweden have inserted a microchip — which is as tiny as a grain of rice — under their skin over the past three years, Agence France-Press reported. The technology was first used in the country in 2015.

The implants have already helped replace the need for a host of daily necessities. Ulrika Celsing's microchip, which is in her hand, has replaced her gym card and office key card. When she enters her workplace, the 28-year-old simply waves her hand near a small box and types in a code before the doors open, AFP said.

Last year, the state-owned SJ rail line started scanning the hands of passengers with biometric chips to collect their train fare while on board.

There is no technological reason the chips couldn't also be used to buy things just like a contactless credit card, but nobody appears to have started testing that yet.

'A slight sting'

The procedure is similar to that of a piercing and involves a syringe injecting the chip into the person's hand. Celsing, who obtained her injection at a work event, told AFP she felt just a slight sting.

But the chip implants could cause infections or reactions in the body's immune system, Ben Libberton, a microbiologist at MAX IV Laboratory in southern Sweden, told AFP.

The rise of 'biohacking'

Biohacking — the modification of bodies with technology — is on the rise as more and more people start using tech wearables such as Apple Watches and FitBits.

About four years ago, Swedish biohacking group Bionyfiken started organising "implant parties" — where groups of people insert chips into their hands en masse — in countries including the US, UK, France, Germany, and Mexico.

Some 50 employees at Wisconsin vending-machine company Three Square Market voluntarily agreed to insert microchips into their hands, which they could then use to buy snacks, log in to computers, or use the photocopier.

Swedes seem more willing to try the technology than most other nations.

The country's 10 million-strong population is generally more willing to share personal details, which are already recorded by the country's social-security system and readily available. According to AFP, people can find each others' salaries by simply calling public tax authorities.

Many of them also don't believe the microchip technology is advanced enough to be hacked. Libberton, the microbiologist, also said the data collected and shared by implants are too limited for users to fear

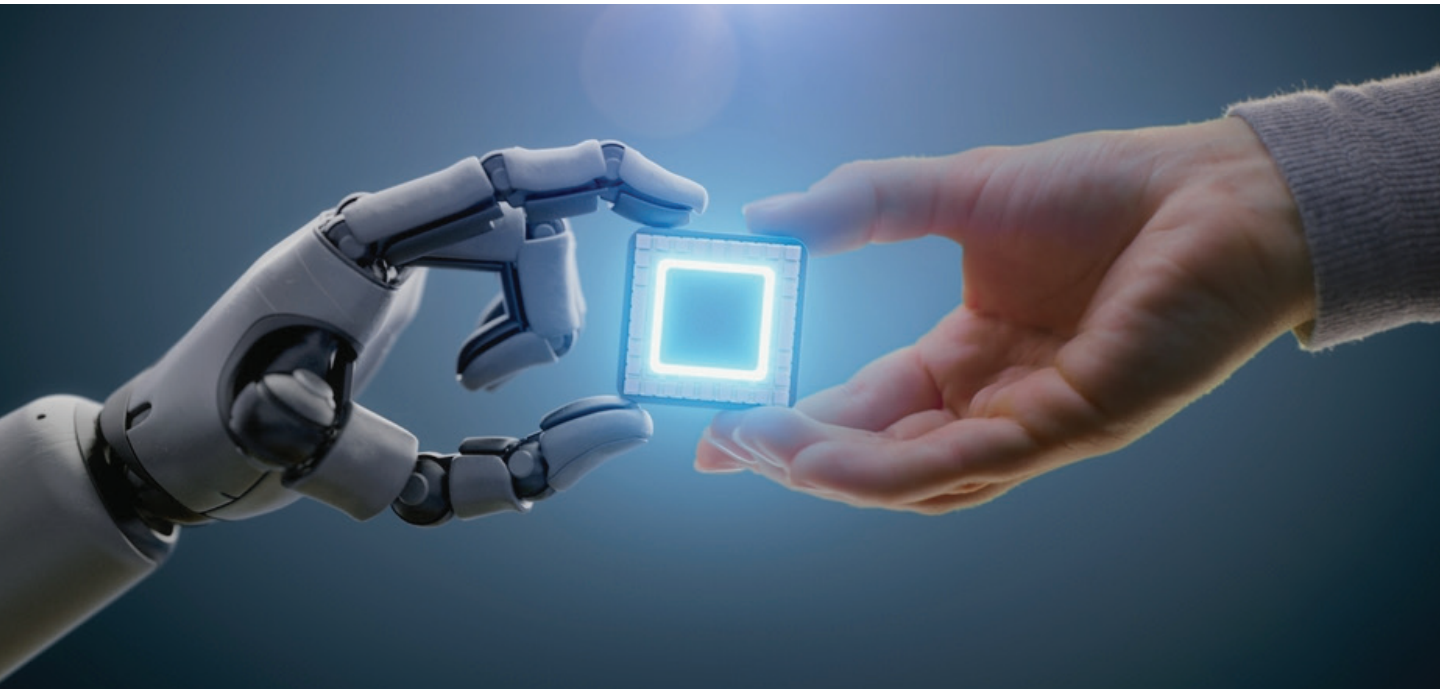
hacking or surveillance.

"The human body is the next big platform. The connected body is already a phenomena. And this implant is just a part of it.

"We are updating our bodies with technology on a large scale already, with wearables. But all of the wearables we wear today will be implantable in five to 10 years.

"Who wants to carry a clumsy smartphone or smartwatch when you can have it in your fingernail? I think that is the direction where it is heading."

[Read more →](#)





Conversational AI: **The Future of Human–Machine Interaction**

Conversational Artificial Intelligence (AI) refers to systems that allow humans to interact naturally with machines through text, speech, or other modalities. Unlike rule-based chatbots, modern conversational AI uses natural language processing (NLP) and machine learning (ML) to understand intent, generate responses, and improve continuously through feedback.

These systems are no longer limited to answering simple queries. They are evolving into multimodal, multi-agent ecosystems that engage across voice, text, images, and video, providing context-aware, intelligent recommendations for enterprises and individuals.



Multi-Agent Architectures

Future conversational AI will be built on multi-agent frameworks. Instead of one monolithic assistant, specialized agents will collaborate:

- **Planner Agents** break down user goals.
- **Domain Agents** handle vertical-specific knowledge (finance, healthcare, retail).
- **Predictive Agents** connect with forecasting and optimization models.
- **Compliance Agents** ensure safety, accuracy, and guardrails.

This modularity makes systems more scalable, adaptable, and enterprise-ready.



Path to Building Advanced Conversational AI

To design meaningful conversational systems, enterprises should:

1. **Understand User Needs:**
Map the primary interaction points and goals
2. **Adopt Multimodal Interfaces:**
Go beyond text and voice to include images, video, and sensor streams. Go beyond text and voice to include images, video, and sensor streams.
3. **Integrate Predictive Insights:**
Connect conversations to recommendation engines where relevant.
4. **Leverage Multi-Agent Systems:**
Build modular agents with orchestration rather than rigid workflows.
5. **Continuously Improve:**
Use reinforcement learning and fine-tuning to adapt over time.



The Road Ahead

Conversational AI is shifting from reactive Q&A tools to intelligent, multimodal companions. With the integration of images, video, and predictive models, and with multi-agent orchestration, they will deliver richer, context-aware, and business-aligned experiences.

Galaxy envisions conversational AI not just as a support tool but as a strategic intelligence layer for enterprises—turning everyday human-machine interactions into opportunities for insight, action, and measurable value. Our expertise ensures your business stays ahead in the AI era

To talk to our experts, email us at marketing@goapl.com



Securing Enterprise Communication Against Advanced Email Threats

Email remains the most widely used communication channel for enterprises but also the most exploited attack vector. Over 90% of cyberattacks start with a phishing email, making email security critical to safeguarding sensitive data, financial transactions, and business continuity.

Check Point's Email Protection solutions provide advanced, AI-driven Défense against phishing, ransomware, business email compromise (BEC), account takeover, and other email-borne threats.

Email is the first link in a chain of attacks, and with the rise of remote work, the use of cloud mailboxes and collaboration apps has increased exponentially. Email security provides organizations with complete, full-suite protection that is constantly adapting and evolving to the ever-changing threat landscape, while providing security admins with an easy-to-deploy and manage platform, making your security offerings easy and efficient.

Key Features of Check Point Email Protection

Threat Prevention

- **Anti-Phishing & Fraud Protection**
Detects and blocks phishing attempts, BEC scams, and impersonation attacks using AI, machine learning, and real-time threat intelligence
- **Anti-Malware & Zero-Day Protection**
Prevents malicious attachments and links from reaching users through Check Point's Threat Cloud intelligence and advanced sandboxing (evading polymorphic and zero-day attacks).

Account Takeover Protection

- Continuous monitoring of login activity and anomalies.
- Automated remediation of compromised accounts.
- Protection against credential harvesting and lateral movement within the network.

Email Encryption & Data Loss Prevention (DLP)

- Ensures sensitive data is protected through policy-based encryption.
- Monitors outgoing communications to prevent unauthorized data sharing.

Cloud-Native Integration

- Works seamlessly with Microsoft 365, Google Workspace, and on-premises email servers.
- API-based architecture ensures no disruption to mail flow.

2.5 Unified Threat Intelligence

- Backed by Threat Cloud, Check Point's real-time global threat intelligence network.
- Protection is continuously updated against emerging threats.

Benefits

- **Comprehensive Security:** One of the few solutions covering phishing, malware, BEC, and insider risks.
- **Reduced Risk of Breach:** Proactively blocks threats before they reach inboxes.
- **User Confidence & Productivity:** Employees can safely interact with emails without constant fear of threats.
- **Seamless Deployment:** API-based setup ensures quick onboarding and minimal IT overhead.
- **Cost-Effective:** Consolidates multiple layers of email security into one solution

Use Cases

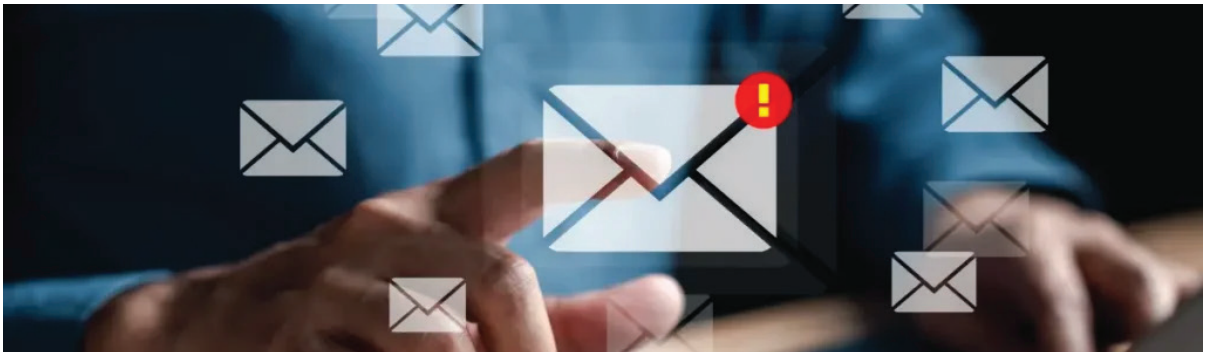
- **Preventing Ransomware Infections** via malicious attachments.
- **Stopping CEO Fraud/BEC** attempts before reaching finance teams.
- **Blocking Phishing Links** in real time, preventing credential theft.
- **Monitoring & Securing Compromised Accounts** to stop internal phishing campaigns.
- **Ensuring Compliance** with data protection regulations (GDPR, HIPAA, etc.) through encryption and DLP.

Why Choose Check Point for Email Security

- Global leader in cybersecurity with 30+ years of expertise.
- Highest catch rates against phishing, ransomware, and BEC (independent test validations).
- Unified security management console (Harmony platform) for email, endpoint, and mobile.
- Future-ready AI-driven detection.

Email Security protects organizations from phishing, malware, and advanced email-borne threats with AI-driven detection and threat prevention.

To talk to our experts, email marketing@goapl.com.



OpenAI CEO Sam Altman's AI warning: **Superintelligence is coming faster than you think.**

OpenAI CEO Sam Altman has made one of his boldest predictions yet. As reported by Business Insider, Altman has claimed that artificial intelligence will surpass human intelligence by the end of this decade. Speaking at a recent event, Altman said that the pace at which AI is developing will accelerate so fast that the world must prepare for a future where machines will outthink humans. "In many ways, GPT5 is already smarter than me, at least, I think a lot of other people too. GPT5 is capable of doing incredible things that many people find very impressive. But it's also not able to do a lot of things that humans could do easily," said Altman.

'Superintelligence within five years'

Altman said that he expects artificial general intelligence (AGI) — systems capable of performing tasks at or beyond the human level — to emerge by 2030, and possibly as soon as 2029. "We are on track to see AI exceed human intelligence within the next five years," he noted, underscoring both the opportunities and risks of such a breakthrough.

[Read more →](#)



Microsoft launches 'vibe working' with Agent Mode and Office Agent in Microsoft 365 Copilot

Microsoft launches 'vibe working' with Agent Mode and Office Agent in Microsoft 365 Copilot.

Microsoft has unveiled Agent Mode in Office apps and Office Agent in Copilot chat, significantly enhancing 365 Copilot with "agentic productivity." Agent Mode empowers Excel and Word users to generate and refine content interactively, democratizing advanced features. Office Agent in Copilot chat creates polished presentations and documents from single prompts, streamlining multi-step tasks. Microsoft has launched new features in its 365 Copilot, introducing Agent Mode in Office apps and Office Agent in Copilot chat. Announcing the new features, the company said the update is designed to bring "agentic productivity" to Office tools, allowing users to

work with AI more interactively. With Agent Mode, available in Excel and Word, users can generate spreadsheets and documents directly within the apps by starting with a simple prompt and then refining results through iterative guidance. Support for PowerPoint will follow soon.

The new Office Agent in Copilot chat, on the other hand, can create polished PowerPoint presentations and ready-to-use Word documents from a single prompt. Microsoft said Excel support will be added in the coming months. The company described the additions as the next step in human-AI collaboration, aimed at helping users complete multi-step tasks and produce higher-quality Office documents, spreadsheets and presentations more efficiently.

[Read more →](#)



Microsoft 365

Empower Your Business with Galaxy's Professional Services

At Galaxy, we help organizations optimize performance, reduce risks, and accelerate cloud transformation through our specialized Professional Services. Our team of experts brings deep technical insight and proven frameworks to ensure your IT environment runs smarter, faster, and more securely.

Explore our key PS offerings:

Cloud Migration Assessment

Plan your move to the cloud with confidence. Identify the right workloads, minimize downtime, and ensure seamless transition with our expert migration roadmap.

Cloud Cost Optimization Assessment

Gain visibility into your cloud spend and uncover savings opportunities without compromising performance or scalability.

Email Risk Assessment

Safeguard your business communication from phishing, ransomware, and data leaks with a comprehensive security health check.

Zabbix Managed Services

Enable proactive monitoring and ensure maximum uptime with Galaxy's Zabbix-as-a-Service - from implementation to ongoing support.

Galaxy KavachProtect

An advanced, all-in-one protection layer for your endpoints and users — ensuring your digital assets remain secure against modern cyber threats.



Take the Next Step

Discover how Galaxy's Professional Services can transform your IT operations.

Reach out to us at
marketing@goapl.com
to schedule your assessment today

All product names, logos, brands, trademarks, and registered trademarks are the property of their respective owners.



 Galaxy Office Automation Pvt. Ltd. B-602,
Lotus Corporate Park, Graham Firth
Compound, Off. Western Express Highway,
Goregaon (E), Mumbai - 400 063.

 +91 22 46108999

 marketing@goapl.com

 www.goapl.com